

RCD330 plus. Rear Cam coding, Amp line out and control.

Noname version with carplay 6RD035187B.



RearCam coding:

VCDS Release 16.8.4: 56-Radio, Open Controller

Comm Status
IC=1 TE=0 RE=0
Protocol: CAN -

Controller Info
VAG Number: **6RD 035 187 B** Component: **Radio 534 5314**
Soft. Coding: **Long Coding** Shop #: **Imp: 790 WSC 00078**
Extra:
Extra: **Geraet 00208**

Basic Functions These are "Safe"
Fault Codes - 02 Readiness - 15
Meas. Blocks - 08 Advanced ID - 1A
Supp. Codes - 18 Adv. Meas. Values

Advanced Functions Refer to Service Manual !
Coding II - 11 Coding - 07
Basic Settings - 04 Adaptation - 10
Output Tests - 03 Security Access - 16

AIDU AUTO

VCDS Release 16.8.4: 56-Radio, Recode Module

Please write down the original values before attempting to change anything.
Incorrect Coding can make a Control Module non-functional!

0 - 6RD 035 187 B - Radio 534 5314

Current coding:
16000400040005

New coding: Long Coding Helper

WorkShop Code (0-99999): **00078** Importer # (0-999): **790** Equipt # (0-262143): **00208**

Do It! Cancel

Ver.1.0.6.24 - Long Coding

Exit | Back to standard | LCode 2 | Help |

1) **0000044004000A**

2) Continue with [Arrow down] on keyboard / [ESC] will close LCode

3) **00 00 04 40 04 00 0A**

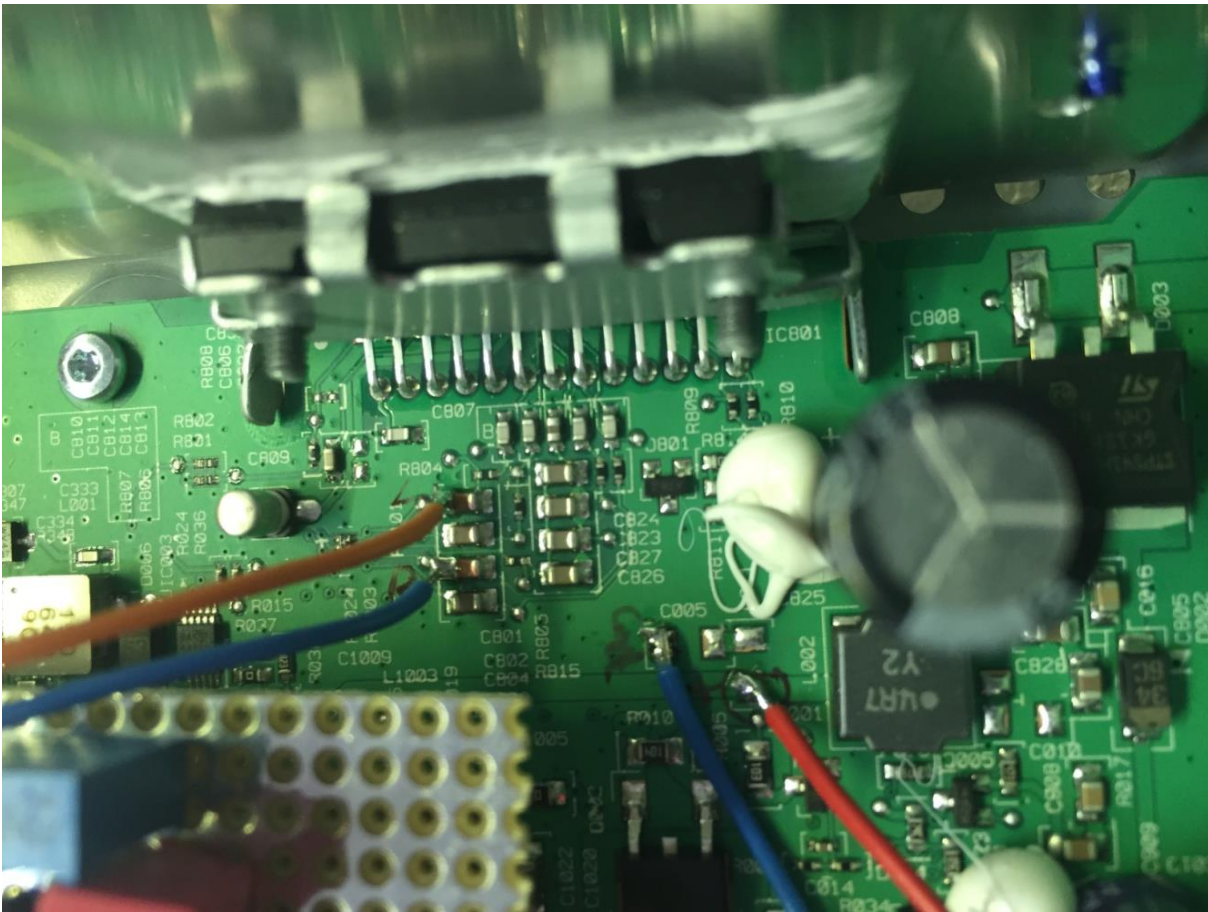
Byte 3 Binary: **01000000**

4) Bit 0 ☐
Bit 1 ☐
Bit 2 ☐
Bit 3 ☐
Bit 4 ☐
Bit 5 ☐
Bit 6 ☒
Bit 7 ☐

After first inserted value, this is the changed Coding value. Coding value is copied at closing VCDS

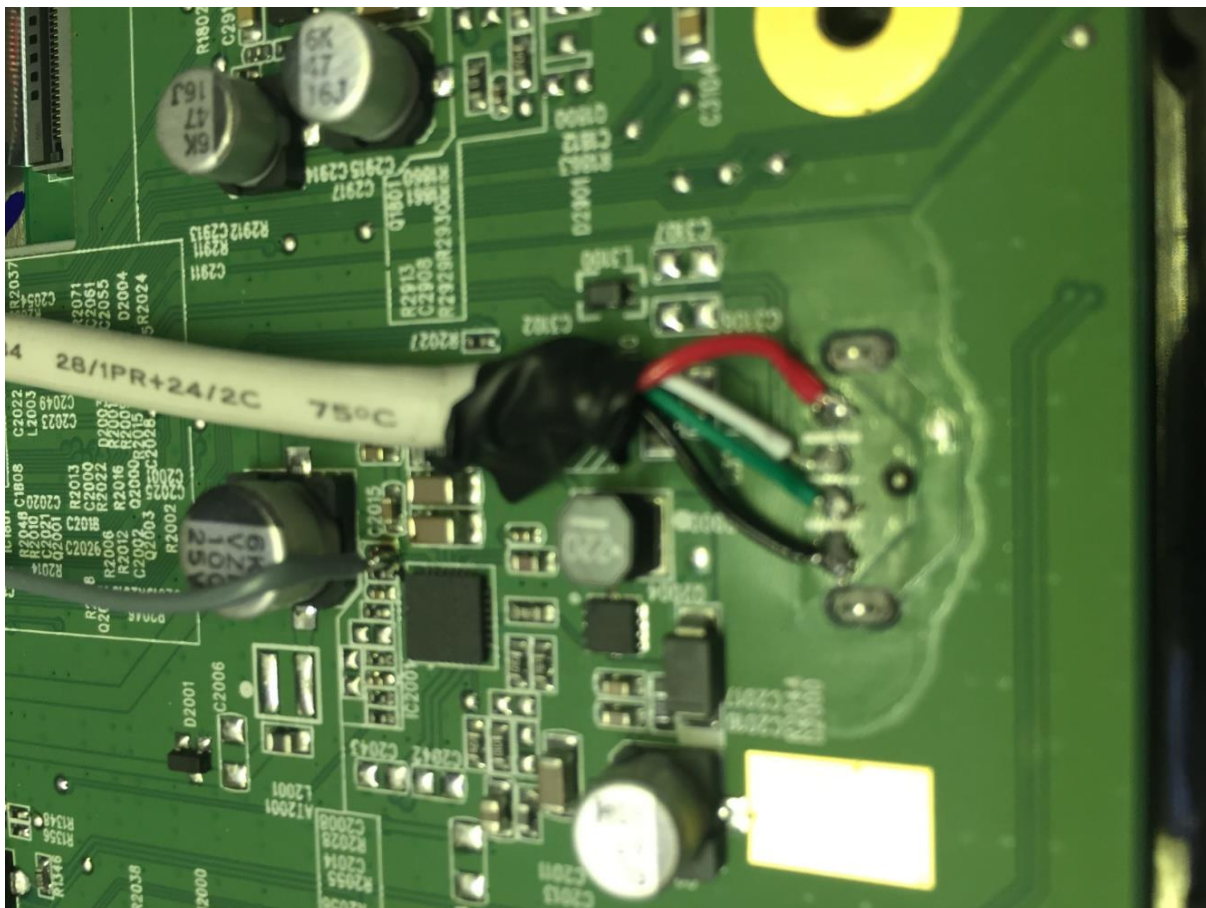
After coding, reset the radio by pressing the on/off button for 10 seconds.

Front line out signals can be found as shown in the picture marked L and R:



The circuit board is a small op-amp to boost the line signal, this is probably not needed as the signal is pretty strong.

If you want the USB routed to the rear you can solder a standard cable here:



The grey wire is the amp remote signal. It is a control signal to the backlight and it is perfect for the purpose as it shuts down immediately after the power button is pressed, thus turning off the amp before dc thumps occurs.

The signal is very weak and you can't draw any current or the backlight fades, so the solution is a mosfet driven relay like this:

